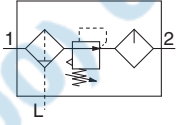


Air Combination

Air Filter + Regulator + Lubricator

AC20-A to AC40-A

JIS Symbol



How to Order

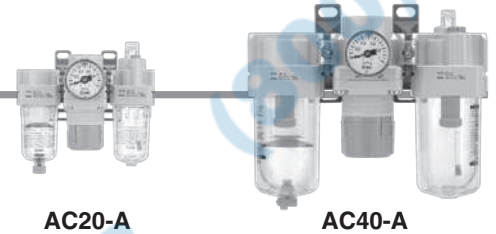
AC **30** - **03** **DG** - **1** - **1** - **1** - **A**

①
②
③
④
⑤
⑥

- Option/Semi-standard: Select one each for **a** to **m**.
- Option/Attachment/Semi-standard symbol: When more than one specification is required, indicate in alphanumeric order.
Example) AC30-F03DM-KSTV-13NR-A

	Symbol	Description	①						
			Body size						
			20	25	30	40			
②	Thread type	Nil	Rc	●	●	●	●		
		N	NPT	●	●	●	●		
		F	G	●	●	●	●		
+									
③	Port size	01	1/8	●	—	—	—		
		02	1/4	●	●	●	●		
		03	3/8	—	●	●	●		
		04	1/2	—	—	—	●		
		06	3/4	—	—	—	●		
+									
④	Option <small>Note 1)</small>	a	Float type auto drain	Nil	Without auto drain	●	●	●	●
			C <small>Note 2)</small>	N.C. (Normal close) Drain port is closed when pressure is not applied.	●	●	●	●	
			D <small>Note 3)</small>	N.O. (Normal open) Drain port is open when pressure is not applied.	—	●	●	●	
	+								
	b	Pressure gauge <small>Note 4)</small>	Nil	Without pressure gauge	●	●	●	●	
			G	Round type pressure gauge (with limit indicator)	●	●	●	●	
M			Round type pressure gauge (with color zone)	●	●	●	●		
+									
⑤	c	Check valve	Nil	Without attachment	●	●	●	●	
			K	Mounting position: AF+AR+K+AL	●	●	●	● <small>Note 5)</small>	
	+								
	d	Pressure switch	Nil	Without attachment	●	●	●	●	
			S <small>Note 6)</small>	Mounting position: AF+AR+S+AL	●	●	●	●	
	+								
	e	T-interface	Nil	Without attachment	●	●	●	●	
			T <small>Note 6)</small>	Mounting position: AF+T+AR+AL	●	●	●	●	
+									
f	3-port valve for residual pressure release	Nil	Without attachment	●	●	●	●		
		V	Mounting position: AF+AR+AL+V	●	●	●	●		
+									
⑥	g	Set pressure <small>Note 7)</small>	Nil	0.05 to 0.7 MPa setting	●	●	●	●	
			1	0.02 to 0.2 MPa setting	●	●	●	●	
	+								
h	Bowl	Nil	Polycarbonate bowl	●	●	●	●		
		C	With bowl guard	●	—	—	—		

Air Combination Series AC20-A to AC40-A



AC20-A

AC40-A

	Symbol	Description	① Body size				
			20	25	30	40	
6 Semi-standard	i Filter drain port	Nil	With drain cock				
		J ^{Note 8)}	Drain guide 1/8				
			Drain guide 1/4				
		W	Drain cock with barb fitting (for ø6 x ø4 nylon tube)				
	+						
	j Lubricator lubricant exhaust port	Nil	Without drain cock				
		3 ^{Note 9)}	Lubricator with drain cock				
	+						
	k Exhaust mechanism	Nil	Relieving type				
		N	Non-relieving type				
+							
l Flow direction	Nil	Flow direction: Left to right					
	R	Flow direction: Right to left					
+							
m Pressure unit	Nil	Name plate and pressure gauge in imperial units: MPa					
	Z ^{Note 10)}	Name plate, caution plate for bowl, and pressure gauge in imperial units: psi, °F					
			○ ^{Note 11)}	○ ^{Note 11)}	○ ^{Note 11)}	○ ^{Note 11)}	

Note 1) Option G, M are not assembled and supplied loose at the time of shipment.

Note 2) When pressure is not applied, condensate which does not start the auto drain mechanism will be left in the bowl. Releasing the residual condensate before ending operations for the day is recommended.

Note 3) If the compressor is small (0.75 kW, discharge flow is less than 100 L/min[ANR]), air leakage from the drain cock may occur during start of operations. N.C. type is recommended.

Note 4) When the pressure gauge is attached, a 1.0 MPa pressure gauge will be fitted for standard (0.7 MPa) type. 0.4 MPa pressure gauge for 0.2 MPa type.

Note 5) Not available with piping port size: 06.
Note 6) The bracket position varies depending on the T-shaped spacer or pressure switch mounting.

Note 7) Pressure can be set higher than the specification pressure in some cases, but use pressure within the specification range.

Note 8) Without a valve function.

Note 9) Filter drain port: When choosing with W, the drain cock of a lubricator will be with barb fittings.

Note 10) For thread type: NPT. This product is for overseas use only according to the new Measurement Law. (The SI unit type is provided for use in Japan.) MPa and psi are shown together on the pressure unit.
Round pressure gauge (with color zone): Cannot be used with M. Available by request for special.

Note 11) ○: For thread type: NPT only.

Standard Specifications

Model	AC20-A	AC25-A	AC30-A	AC40-A	AC40-06-A	
Component	Air filter	AF20-A	AF30-A	AF30-A	AF40-A	AF40-06-A
	Regulator	AR20-A	AR25-A	AR30-A	AR40-A	AR40-06-A
	Lubricator	AL20-A	AL30-A	AL30-A	AL40-A	AL40-06-A
Port size	1/8, 1/4		1/4, 3/8		3/4	
Pressure gauge port size	1/8					
Fluid	Air					
Ambient and fluid temperature	- 5 to 60°C (with no freezing)					
Proof pressure	1.5 MPa					
Max. operating pressure	1.0 MPa					
Set pressure range	0.05 to 0.7 MPa					
Nominal filtration rating	5 μm					
Recommended lubricant	Class 1 turbine oil (ISO VG32)					
Bowl material	Polycarbonate					
Bowl guard	Semi-standard (Steel)	Standard (Polycarbonate)				
Regulator construction	Relieving type					
Weight (kg)	0.39	0.67	0.82	1.26	1.43	