

New

# Pressure Switch/Reed Switch Type

**16% lighter**

Weight: **62 g**

\*Previous type 74 g  
Compared with IS1000  
(Made by SMC)

**11% smaller**

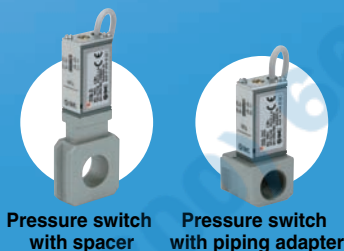
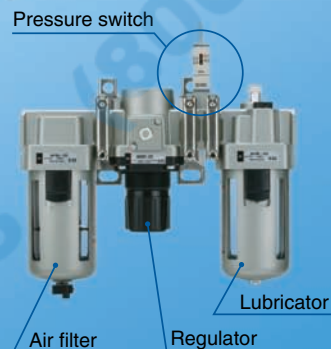
Overall height: **52 mm**

\*Previous type 58.5 mm  
Compared with IS1000  
(Made by SMC)

- 100 V AC/DC specifications
- Set pressure range  
**0.1 to 0.4 MPa**
- Service life: **5 million cycles**



- Can be connected to Modular type F.R.L. units.



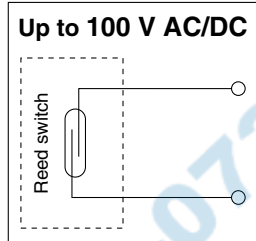
## Specifications

Model	IS10-01
Fluid	Air/Inert gas
Proof pressure	1.0 MPa
Max. operating pressure	0.7 MPa
Set pressure range	0.1 to 0.4 MPa Option: 0.1 to 0.6 MPa
Ambient and fluid temperature	-5 to 60°C (No freezing)
Contacts	1a
Error of scale	±0.05 MPa or less
Hysteresis	Fixed 0.08 MPa or less
Repeatability	±0.05 MPa or less
Wiring specifications	Grommet, Lead wire length: 0.5 m Option: 3 m, 5 m
Enclosure	Equivalent to IP40
Port size	1/8
Weight	62 g

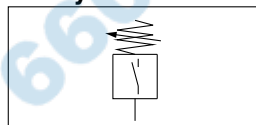
## Switch Characteristics

Max. contact capacity	AC 2 A, DC 2 W		
Voltage AC/DC	24 V or less	48 V	100 V
Max. operating current and range	50 mA	40 mA	20 mA

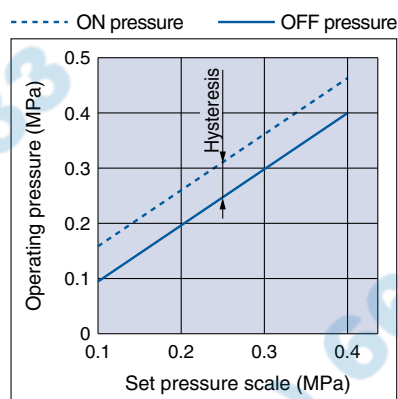
## Electrical Circuit



## JIS Symbol



## Set Pressure Range



## How to Order

IS10-**1** 01 **2** - **3**

	Symbol	Description
①	Thread type	Nil Rc N NPT
		+ None
		S With seal
②	Seal	Nil None S With seal
	a Set pressure range	Nil 0.1 to 0.4 MPa
		6 Note1 0.1 to 0.6 MPa
b Lead wire length		Nil 0.5 m
	L 3 m	
	Z 5 m	
③ Semi-standard		+ Nil MPa
	c Scale plate pressure unit	P Note2 Both MPa and psi

Semi-standard: Select one option each in a through c. Place them in alphanumerical order.

Example) IS10-N01-6PZ

Note1) Set pressure range of 6P(L, Z) is 0.2 to 0.6 MPa (30 to 90 psi).

Note2) This product is for overseas use only according to the new Measurement Law. (The SI unit type is provided for use in Japan.)

Series **IS10**



CAT.ES60-19A