

# Electric Gripper 2-Finger Type

Step Motor (Servo/24 VDC)

## Series LEHZ

LEHZ10, 16, 20, 25, 32, 40



### How to Order

LEHZ 10   K 2 - 4     - S 1 6N 1  

1
2
3
4
5
6
7
8
9
10
11
12

#### 1 Size

10
16
20
25
32
40

#### 2 Motor size

Nil	Basic
L (Note)	Compact

Note) Size: 10, 16, 20, 25 only

#### 3 Lead

K	Basic
---	-------

#### 4 2-finger type

#### 5 Stroke [mm]

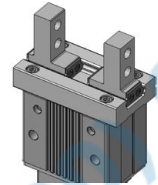
Stroke/both sides	Size
4	10
6	16
10	20
14	25
22	32
30	40

#### 6 Finger options

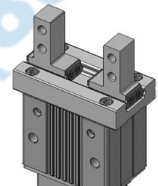
Nil	Basic (Tapped in opening/closing direction)
A	Side tapped mounting
B	Through-hole in opening/closing direction
C	Flat fingers

#### Finger options

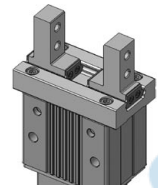
Nil: Basic  
(Tapped in opening/closing direction)



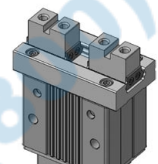
A: Side tapped mounting



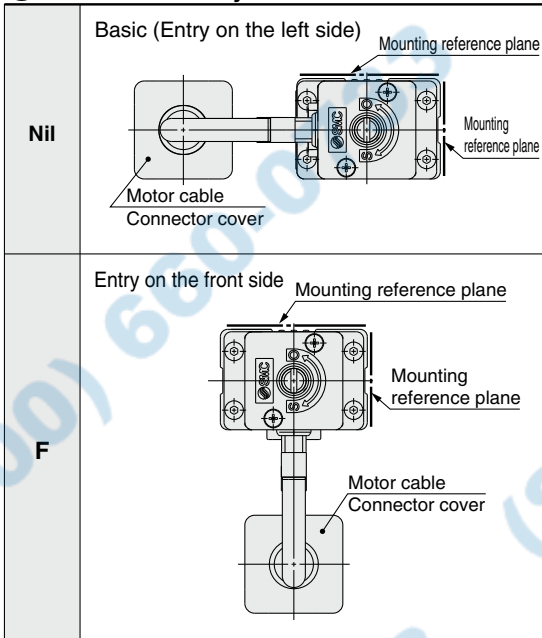
B: Through-hole in opening/closing direction



C: Flat fingers



#### 7 Motor cable entry



#### Caution

##### [CE-compliant products]

EMC compliance was tested by combining the electric actuator LEH series and the controller LEC series. The EMC depends on the configuration of the customer's control panel and the relationship with other electrical equipment and wiring. Therefore conformity to the EMC directive cannot be certified for SMC components incorporated into the customer's equipment under actual operating conditions. As a result it is necessary for the customer to verify conformity to the EMC directive for the machinery and equipment as a whole.

##### [UL-compliant products]

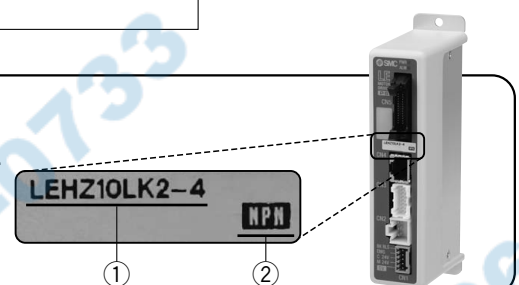
When conformity to UL is required, the electric actuator and controller/driver should be used with a UL1310 Class 2 power supply.

#### The actuator and controller/driver are sold as a package.

Confirm that the combination of the controller/driver and the actuator is correct.

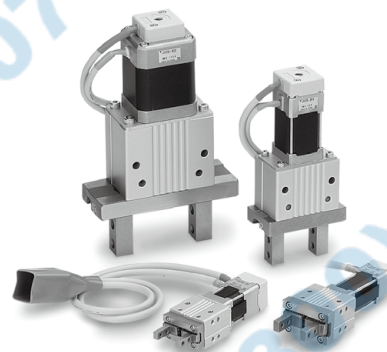
<Check the following before use.>

- ① Check the actuator label for model number. This matches the controller/driver.
- ② Check Parallel I/O configuration matches (NPN or PNP).



\* Refer to the operation manual for using the products. Please download it via our website, <http://www.smcworld.com>

# Electric Gripper 2-Finger Type **Series LEHZ**



Model Selection

LEHZ

LEHZJ

Step Motor (Servo/24 VDC)

LEHF

LEHS

LECP6

LEC-G

LECP1

LECPA

Specific Product Precautions

## 8 Actuator cable type\*

<b>Nil</b>	Without cable
<b>S</b>	Standard cable
<b>R</b>	Robotic cable (Flexible cable)

\* The standard cable should be used on fixed parts. For using on moving parts, select the robotic cable.

## 9 Actuator cable length [m]

<b>Nil</b>	Without cable
<b>1</b>	1.5
<b>3</b>	3
<b>5</b>	5
<b>8</b>	8*
<b>A</b>	10*
<b>B</b>	15*
<b>C</b>	20*

\* Produced upon receipt of order (Robotic cable only)  
Refer to the specifications Note 3) on page 9.

## 10 Controller/Driver type\*

<b>Nil</b>	Without controller/driver	
<b>6N</b>	<b>LECP6</b> (Step data input type)	NPN
<b>6P</b>		PNP
<b>1N</b>	<b>LECP1</b> (Programless type)	NPN
<b>1P</b>		PNP
<b>AN</b>	<b>LECPA</b> (Pulse input type)	NPN
<b>AP</b>		PNP

\* For details about controllers/driver and compatible motors, refer to the compatible controllers/driver below.

## 11 I/O cable length [m]\*1

<b>Nil</b>	Without cable
<b>1</b>	1.5
<b>3</b>	3*2
<b>5</b>	5*2

\*1 When "Without controller/driver" is selected for controller/driver types, I/O cable cannot be selected. Refer to page 61 (For LECP6), page 73 (For LECP1) or page 80 (For LECPA) if I/O cable is required.




\*2 When "Pulse input type" is selected for controller/driver types, pulse input usable only with differential. Only 1.5 m cables usable with open collector.

## 12 Controller/Driver mounting

<b>Nil</b>	Screw mounting
<b>D</b>	DIN rail mounting*

\* DIN rail is not included. Order it separately.  
(Refer to page 56.)

## Compatible Controllers/Driver

Type	Step data input type	Programless type	Pulse input type
			
<b>Series</b>	<b>LECP6</b>	<b>LECP1</b>	<b>LECPA</b>
<b>Features</b>	Value (Step data) input Standard controller	Capable of setting up operation (step data) without using a PC or teaching box	Operation by pulse signals
<b>Compatible motor</b>	Step motor (Servo/24 VDC)	Step motor (Servo/24 VDC)	
<b>Maximum number of step data</b>	64 points	14 points	—
<b>Power supply voltage</b>	24 VDC		
<b>Reference page</b>	Page 55	Page 68	Page 74