

Electric Slide Table/Compact Type

Step Motor (Servo/24 VDC)

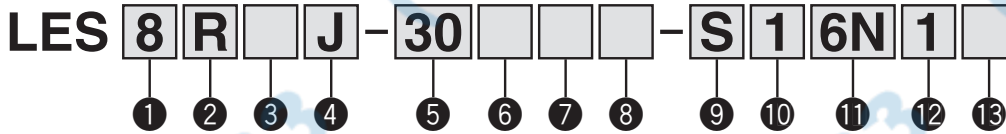
Servo Motor (24 VDC)

Series LES

LES8, 16, 25



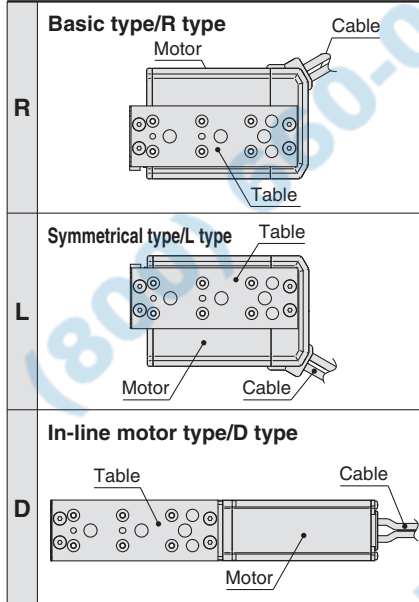
How to Order



① Size

8
16
25

② Motor mounting position



③ Motor type

Symbol	Type	Compatible controllers/driver
Nil	Step motor (Servo/24 VDC)	LECP6 LECP1 LECPA
A	Servo motor* (24 VDC)	LECA6

* LES25DA is not available.

⚠ Caution

[CE-compliant products]

① EMC compliance was tested by combining the electric actuator LES series and the controller LEC series. The EMC depends on the configuration of the customer's control panel and the relationship with other electrical equipment and wiring. Therefore conformity to the EMC directive cannot be certified for SMC components incorporated into the customer's equipment under actual operating conditions. As a result it is necessary for the customer to verify conformity to the EMC directive for the machinery and equipment as a whole.

② For the servo motor (24 VDC) specification, EMC compliance was tested by installing a noise filter set (LEC-NFA).

Refer to page 61 for the noise filter set. Refer to the LECA Operation Manual for installation.

[UL-compliant products]

When conformity to UL is required, the electric actuator and controller/driver should be used with a UL1310 Class 2 power supply.

④ Lead [mm]

Symbol	LES8	LES16	LES25
J	8	10	16
K	4	5	8

⑤ Stroke [mm]

Stroke	30	50	75	100	125	150
Model						
LES8	●*	●*	●	—	—	—
LES16	●*	●*	●	●	—	—
LES25	●*	●	●	●	●	●

* R/L type with lock is not available.

⑥ Motor option

Nil	Without option
B	With lock

⑦ Body option

Nil	Without option
S	Dustproof specification*

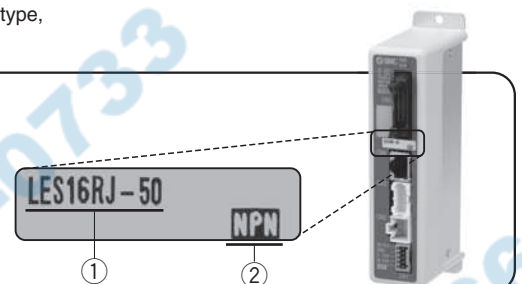
* For R/L type (IP5X equivalent), a scraper is mounted on the rod cover, and gaskets are mounted on both the end covers. For D type, a scraper is mounted on the rod cover.

The actuator and controller/driver are sold as a package.

Confirm that the combination of the controller/driver and the actuator is correct.

<Check the following before use.>

- ① Check the actuator label for model number. This matches the controller/driver.
- ② Check Parallel I/O configuration matches (NPN or PNP).



* Refer to the operation manual for using the products. Please download it via our website, <http://www.smcworld.com>

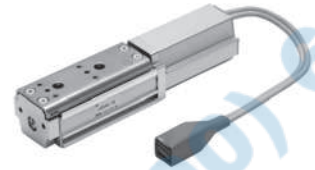
Electric Slide Table/Compact Type *Series LES*



Basic type (R type)



Symmetrical type (L type)

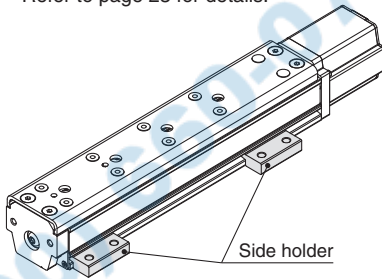


In-line motor type (D type)

8 Mounting*

Symbol	Mounting	R type L type	D type
Nil	Without side holder	●	●
H	With side holder (4 pcs.)	—	●

* Refer to page 23 for details.



9 Actuator cable type*1

Nil	Without cable
S	Standard cable*2
R	Robotic cable (Flexible cable)

*1 The standard cable should be used on fixed parts. For using on moving parts, select the robotic cable.

*2 Only available for the motor type "Step motor."

10 Actuator cable length [m]

Nil	Without cable
1	1.5
3	3
5	5
8	8*
A	10*
B	15*
C	20*

* Produced upon receipt of order (Robotic cable only)
Refer to the specifications Note 3) on page 11.

11 Controller/Driver type*1

Nil	Without controller/driver	
6N	LECP6/LECA6 (Step data input type)	NPN
6P		PNP
1N	LECP1 *2 (Programless type)	NPN
1P		PNP
AN	LECPA *2 (Pulse input type)	NPN
AP		PNP

*1 Refer to page 52 for the detailed specifications of the controller/driver.

*2 Only available for the motor type "Step motor."

12 I/O cable length [m]*1

Nil	Without cable
1	1.5
3	3*2
5	5*2

*1 When "Without controller/driver" is selected for controller/driver types, I/O cable cannot be selected. Refer to page 61 (For LECP6/LECA6), page 74 (For LECP1) or page 81 (For LECPA) if I/O cable is required.

*2 When "Pulse input type" is selected for controller/driver types, pulse input usable only with differential. Only 1.5 m cables usable with open collector.

13 Controller/Driver mounting

Nil	Screw mounting
D	DIN rail mounting*

* DIN rail is not included. Order it separately.
Refer to page 54 for details.

Compatible Controllers/Driver

Type	Step data input type	Step data input type	Programless type	Pulse input type
Series	LECP6		LECA6	LECP1
Features	Value (Step data) input Standard controller		Capable of setting up operation (step data) without using a PC or teaching box	Operation by pulse signals
Compatible motor	Step motor (Servo/24 VDC)	Servo motor (24 VDC)	Step motor (Servo/24 VDC)	
Maximum number of step data	64 points		14 points	—
Power supply voltage	24 VDC			
Reference page	Page 53		Page 68	Page 75