

# Rotary Gripper Series MRHQ

## How to Order

**MRH Q 10 D - 90 S - M9NV - M9N**

**Lead wire length**

Nil	0.5 m
L	3 m
Z	5 m

**Number of auto switches**

Nil	2 pcs.
S	1 pc.

**Type of auto switch for detecting rotation**

Nil Without auto switch (Built-in magnet)

**Applicable Auto Switch**

Type	Electrical entry	Indicator light	Wiring (output)	Load voltage DC	Auto switch symbol		Lead wire length* (m)			Applicable load	Auto switch model
					In-line	Perpendicular	0.5 (Nil)	3 (L)	5 (Z)		
Solid state switches	Grommet	Yes	3-wire (NPN)	5V	M9N	●	●	○	IC circuit	Relay PLC	D-M9N□-746
			3-wire (PNP)	12V	M9P	●	●	○			D-M9P□-746
			2-wire	12V	M9B	●	●	○			D-M9B□-746

\* Lead wire length symbols: 0.5 m ..... Nil (Example) M9N  
3 m ..... L M9NL  
5 m ..... Z M9NZ

\* Refer to page 731 for further information on auto switches.  
\* Order with an auto switch part number when ordering a single auto switch unit.  
\* Auto switches marked with a "○" are made upon receipt of order.

**Type of auto switch for gripper opening/closing**

N Without auto switch (Built-in magnet)

**Applicable Auto Switch**

Type	Electrical entry	Indicator light	Wiring (output)	Load voltage DC	Auto switch symbol		Lead wire length* (m)			Applicable load	Auto switch model
					In-line	Perpendicular	0.5 (Nil)	3 (L)	5 (Z)		
Solid state switches	Grommet	Yes	3-wire (NPN)	5V	M9NV	●	●	○	IC circuit	Relay PLC	D-M9NV□
			3-wire (PNP)	12V	M9PV	●	●	○			D-M9PV□
			2-wire	12V	M9BV	●	●	○			D-M9BV□

\* Lead wire length symbols: 0.5 m ..... Nil (Example) M9NV  
3 m ..... L M9NVL  
5 m ..... Z M9NVZ

\* Refer to page 774 for further information on auto switches.  
\* Please order with an auto switch part number when ordering a single auto switch unit.  
\* Auto switches marked with a "○" are made upon receipt of order.

**Rotary gripper**

**Gripper**

Q Parallel type: 2 fingers

**Gripper bore**

10	10 mm
16	16 mm
20	20 mm
25	25 mm

**Action**

D	Double acting
S	Single acting (Normally open)
C	Single acting (Normally closed)

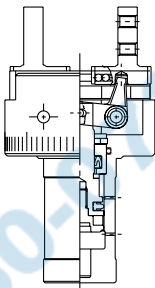
**Rotation angle**

90	90°
180	180°

**Single vane**

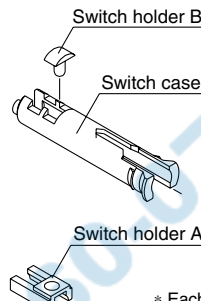
### Unit list

#### Gripper unit



Model	Unit part no.
MRHQ10D	P407090-3D
MRHQ10S	P407090-3S
MRHQ10C	P407090-3C
MRHQ16D	P407060-3D
MRHQ16S	P407060-3S
MRHQ16C	P407060-3C
MRHQ20D	P407080-3D
MRHQ20S	P407080-3S
MRHQ20C	P407080-3C
MRHQ25D	P408080-3D
MRHQ25S	P408080-3S
MRHQ25C	P408080-3C

#### Switch mounting unit



Model	Unit part no.
MRHQ10□	P407090-1
MRHQ16□	P407060-1
MRHQ20□	
MRHQ25□	

\* Each unit includes two of each of the parts indicated left.  
\* Auto switches are not included with a unit.

MHZ  
MHF  
MHL  
MHR  
MHK  
MHS  
MHC  
MHT  
MHY  
MHW  
-X□  
MRHQ  
MA  
D-□