

Air Slide Table

Series MXP

ø6, ø8, ø10, ø12, ø16

How to Order

Precision
Air Slide Table

MXP 12 - 15 - M9BW

Bore size/Standard stroke (mm)

6	5, 10
8	10, 20
10	10, 20
12	15, 25
16	20, 30

Adjuster option

Symbol	Adjuster option
Nil	Rubber stopper
B	Shock absorber
C	Metal stopper

• Made to Order
For details, refer to page 195.

• Number of auto switches

Nil	2 pcs.
S	1 pc.
n	"n" pcs.

* In the case of MXP6-5, with 2 auto switches are available for D-M9□ type and D-M9□V type only. For other switches, no other choice is affordable but with 1 piece attached (symbol: S).

• Auto switch

Nil	Without auto switch (Built-in magnet)
-----	---------------------------------------

* For the applicable auto switch model, refer to the table below.

• Magnet/Switch rail

Nil	With magnet and rail
N	Without magnet and rail

* Auto switch cannot be mounted on type N (without magnet and rail).



Note 1) Adjuster for Series MXP6 is available for one side only.
Note 2) Shock absorber is not available in Series MXP6 and MXP8.
Note 3) Stroke adjusting screw of metal stopper uses stainless steel 304.
For heat treated specifications, refer to "Made to Order Specifications".

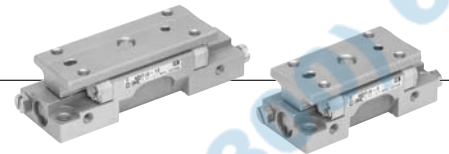
Applicable Auto Switch/Refer to pages 1719 to 1827 for further information on auto switches.

Type	Special function	Electrical entry	Indicator light	Wiring (Output)	Load voltage		Auto switch model		Lead wire length (m)				Pre-wired connector	Applicable load			
					DC	AC	Perpendicular	In-line	0.5 (Nil)	1 (M)	3 (L)	5 (Z)		IC circuit	Relay, PLC		
Solid state switch	Diagnostic indication (2-color indication)	Grommet	Yes	3-wire (NPN)	24 V	5 V, 12 V	—	M9NV	M9N	●	●	●	○	○	○	IC circuit	Relay, PLC
				3-wire (PNP)				M9PV	M9P	●	●	●	○	○	○	—	
				2-wire				M9BV	M9B	●	●	●	○	○	○	—	
				3-wire (NPN)				M9NWV	M9NW	●	●	●	○	○	○	IC circuit	
				3-wire (PNP)				M9PWV	M9PW	●	●	●	○	○	○	IC circuit	
Reed switch	—	Grommet	No	3-wire (NPN equivalent)	24 V	5 V	—	A96V	A96	●	—	●	—	—	—	IC circuit	Relay, PLC
				2-wire				A93V	A93	●	—	●	—	—	—	—	
				—				A90V	A90	●	—	●	—	—	—	IC circuit	

* Lead wire length symbols: 0.5 m..... Nil (Example) M9NW
1 m..... M (Example) M9NWM
3 m..... L (Example) M9NWL
5 m..... Z (Example) M9NWZ

* Solid state auto switches marked with "○" are produced upon receipt of order.

* Since there are other applicable auto switches than listed, refer to page 209 for details.
* For details about auto switches with pre-wired connector, refer to pages 1784 and 1785.
* Auto switches are shipped together (not assembled).



MXPJ6/Air Slide Table ø6

How to Order

Air Slide Table **MXPJ6 - 10**

Standard stroke

5	5 mm
10	10 mm



* MPXJ6 with auto switch is not available.

Specifications

Bore size (mm)	6
Piping port size	M3 x 0.5
Fluid	Air
Action	Double acting
Operating pressure	0.15 to 0.7 MPa
Proof pressure	1.05 MPa
Ambient and fluid temperature	-10 to 60°C
Piston speed	50 to 500 mm/s
Cushion	Rubber bumper
Lubrication	Non-lube
Stroke length tolerance	+1 0 mm

Theoretical Output

Bore size (mm)	Piston area (mm ²)	Operating pressure (MPa)					
		0.2	0.3	0.4	0.5	0.6	0.7
6	28	6	8	11	14	17	20

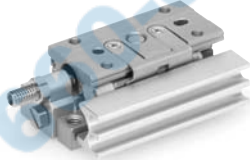
Stroke

Model	Standard stroke (mm)
MXPJ6	5, 10

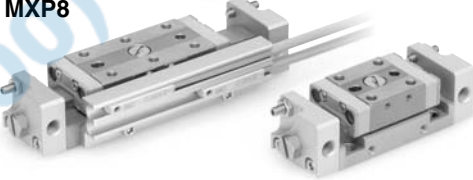
Mass

Model	Body mass (g)
MXPJ6-5	80
MXPJ6-10	105

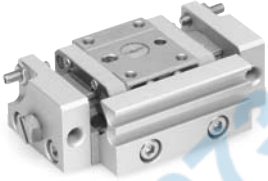
MXP6



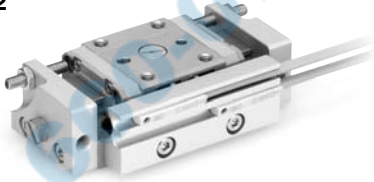
MXP8



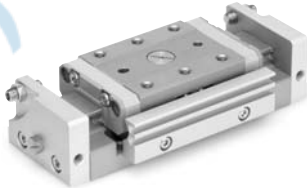
MXP10



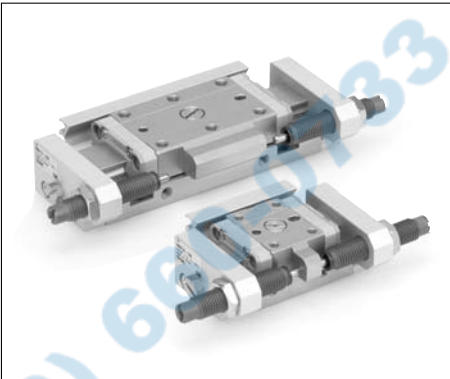
MXP12



MXP16



With Shock Absorber



* Exclusive body is to be used for the one with shock absorber.
Changing specifications, such as replacing component parts and retrofitting shock absorber is not possible.



Made to Order Specifications
(For details, refer to pages 1955 to 2021.)

Symbol	Specifications
-X7	PTFE grease
-X9	Grease for food
-X16	Heat treated metal stopper bolt specification
-X23	Axial piping port set screw specification
-X39	Fluororubber seal
-X42	Anti-rust guide specification
-X45	EPDM seal
-X51	Long adjustment nut specification

For clean room specifications, refer to "Pneumatic Clean Series" catalog.

Specifications

Model		MXP6	MXP8	MXP10	MXP12	MXP16
Bore size (mm)		6	8	10	12	16
Piping port size		M3 x 0.5	M5 x 0.8			
Fluid		Air				
Action		Double acting				
Operating pressure		0.15 to 0.7 MPa				
Proof pressure		1.05 MPa				
Ambient and fluid temperature		-10 to 60°C				
Piston speed		50 to 500 mm/s (Adjuster option/Metal stopper: 50 to 200 mm/s)				
Cushion		Rubber bumper Shock absorber (Option is not available for Series MXP6 and MXP8) None (Adjuster option/Metal stopper)				
Lubrication		Non-lube				
Stroke adjuster		Standard equipment (Adjustable on one side only, for the MXP6)				
Stroke adjustment range	Rubber stopper	0 to 5 mm on one side only	Each 0 to 3 mm on both ends			
	Shock absorber	—	Each 0 to 5 mm on both ends			
	Metal stopper	0 to 6 mm on one side only	Each 0 to 5 mm on both ends	Each 0 to 4 mm on both ends		
Auto switch		Reed auto switch (2-wire, 3-wire) Solid state auto switch (2-wire, 3-wire) 2-color indication solid state auto switch (2-wire, 3-wire)				
Stroke length tolerance		+1 0 mm				

Theoretical Output

Bore size (mm)	Piston area (mm ²)	Operating pressure (MPa)					
		0.2	0.3	0.4	0.5	0.6	0.7
6	28	6	8	11	14	17	20
8	50	10	15	20	25	30	35
10	79	16	24	32	40	47	55
12	113	23	34	45	57	68	79
16	201	40	60	80	101	121	141

Standard Stroke

Model	Standard stroke (mm)
MXP6	5, 10
MXP8	10, 20
MXP10	10, 20
MXP12	15, 25
MXP16	20, 30

Mass

Model	Body mass (g)	Additional mass of magnet and rail (g)
MXP6-5	80	10
MXP6-10	105	10
MXP8-10	100	8
MXP8-20	160	12
MXP10-10	130	13
MXP10-20	210	20
MXP12-15	210	17
MXP12-25	320	23
MXP16-20	640	20
MXP16-30	830	23

Shock Absorber Specifications

Shock absorber model		RB0805	RB0806
Applicable slide table		MXP10/12	MXP16
Max. energy absorption (J)		0.98	2.94
Stroke absorption (mm)		5	6
Max. collision speed (mm/s)		50 to 500	
Max. operating frequency (cycle/min)		80	80
Max. allowable thrust (N)		245	245
Ambient temperature range (°C)		-10 to 60	
Spring force (N)	Extended	1.96	1.96
	Retracted	3.83	4.22
Mass (g)		15	15

* The shock absorber service life is different from that of the MXP cylinder depending on the operating conditions. Refer to the Series RB Specific Product Precautions for the replacement period.

MXH

MXU

MXS

MXQ

MXF

MXW

MXJ

MXP

MXY

MTS

D-□

-X□

Individual -X□