

## How to Order

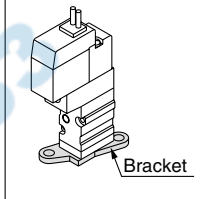
### Light/Surge voltage suppressor

Nil	Without light/surge voltage suppressor
S	With surge voltage suppressor
Z	With light/surge voltage suppressor
R	With surge voltage suppressor (Non-polar type)
U	With light/surge voltage suppressor (Non-polar type)

- \* For AC voltage valves there is no "S" option. It is already built-in to the rectifier circuit.
- \* For type R, U, DC voltage is only available.
- \* Power saving circuit is only available in the "Z" type.

### Bracket

Nil: Without bracket  
F: With bracket



- \* Bracket is mounted.
- \* External pilot type is not available.

### Rated voltage

DC	
5	24 VDC
6	12 VDC
V	6 VDC
S	5 VDC
R	3 VDC

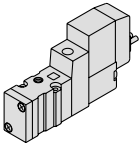
AC (50/60 Hz)	
1	100 VAC
2	200 VAC
3	110 VAC [115 VAC]
4	220 VAC [230 VAC]

- \* For type "W□", DC voltage is only available.

### Type of actuation

1	Normally closed
2	Normally open

3 port



(For manifold type 20, 20R)

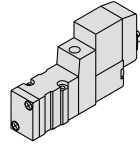
Body ported

SYJ3 1 2 □ □ 5 M □ □ M3 □

Base mounted

SYJ3 1 4 □ □ 5 M □ □ □ □

3 port



(For sub-plate type, manifold type 41, S41, 42, S42, 42R, S42R)

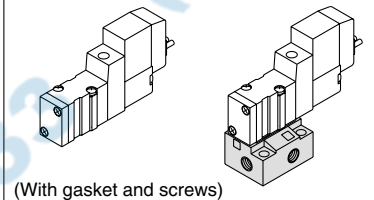
### Coil specifications

Nil	Standard
T	With power saving circuit (24, 12 VDC only)

- \* Power saving circuit is not available in the case of "W□" type.

### Port size

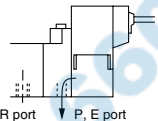
Nil: Without sub-plate M5: M5 port With sub-plate



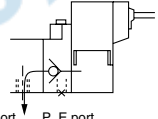
(With gasket and screws)

### Body option

Nil: Individual pilot exhaust type

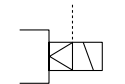


M: Common exhaust for the pilot and main valve



(Pilot valve exhaust is centralized to main valve.)

R: External pilot type\*



- \* SYJ3□2R is only for manifold use.

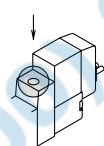
### Electrical entry

24, 12, 6, 5, 3 VDC/100, 110, 200, 220 VAC				24, 12, 6, 5, 3 VDC	
Grommet	L plug connector	M plug connector		M8 connector	
G: Lead wire length 300 mm	L: With lead wire (Length 300 mm)	M: With lead wire (Length 300 mm)	MN: Without lead wire	WO: Without connector cable	
H: Lead wire length 600 mm	LN: Without lead wire	LO: Without connector	MO: Without connector		

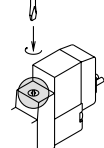
- \* "LN," "MN" type: with 2 sockets.
- \* For connector cable of M8 connector, refer to page 4-4-60.

### Manual override

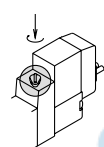
Nil: Non-locking push type



D: Push-turn locking slotted type



E: Push-turn locking lever type



Note) When placing an order for body ported solenoid valve as a single unit, mounting bolt for manifold and gasket are not attached. Order them separately, if necessary. (For details, refer to page 4-4-11.)