

3 Port Solenoid Valve Pilot Operated Poppet Type Series VG342 Rubber Seal



Low power consumption

4.8 W DC (Standard type)
2 W DC (Energy-saving type)

No lubrication required

Possible to use in vacuum or under low pressures

External pilot
Vacuum: Up to -101.2 kPa
Low pressure: 0 to 0.2 MPa

Changeable actuation:

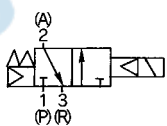
N.C., N.O., or external pilot

Can be used as a selector or divider valve (External pilot)

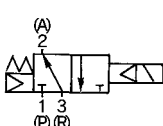


JIS Symbol

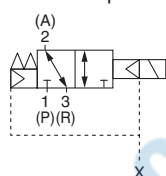
N.C.



N.O.



External pilot



How to Order

VG342 [] - 1 G [] - 04 [] A - [] - []

Valve option

Nil	Internal pilot
R	External pilot

Rated voltage

1	100 VAC, 50/60 Hz
2	200 VAC, 50/60 Hz
3*	110 VAC, 50/60 Hz
4*	220 VAC, 50/60 Hz
5	24 VDC
6*	12 VDC
7*	240 VAC, 50/60 Hz
9*	Other

* Option

Electrical entry

G	Grommet
D	DIN terminal
E	Grommet terminal
T	Conduit terminal

Light/Surge voltage suppressor

Nil	None
S	With surge voltage suppressor (Only grommet type is only available.)
Z	With light/surge voltage suppressor (Except grommet type)

CE-compliant

Nil	—
Q	CE-compliant*

* Electrical entry: D only

Pilot valve option

Nil	Standard type
Y *	Energy-saving type (DC only)
E *	Continuous duty type

* Option

Passage symbol

Nil	External pilot
A	N.C. (Normally closed)
B	N.O. (Normally open)

Thread type

Nil	Rc
F	G
N	NPT
T	NPTF

Port size

04	1/2
06	3/4
10	1

How to Order Pilot Valve Assembly

VO307 [] - 1 G [] - X84 - []

Valve option

Nil	Standard type
Y *	Energy-saving type
E *	Continuous duty type

* Option

Rated voltage

1	100 VAC, 50/60 Hz
2	200 VAC, 50/60 Hz
3*	110 VAC, 50/60 Hz
4*	220 VAC, 50/60 Hz
5	24 VDC
6*	12 VDC
7*	240 VAC, 50/60 Hz
9*	Other

* Option

CE-compliant

Nil	—
Q	CE-compliant*

* Electrical entry: D only

Pilot valve assembly for VG342

Light/Surge voltage suppressor

Nil	None
S	With surge voltage suppressor (Only grommet type is available.)
Z	With light/surge voltage suppressor (Except grommet type)

Electrical entry

G	Grommet
D	DIN terminal
E	Grommet terminal
T	Conduit terminal

SYJ

VQZ

VP

VG

VP3